

Science of Seed Processing

General

Brand	Saat Technologe
Designation	Drawer Magnet
Model	EZ-DM-200
Application	Capturing Metal from Seed Flow.



Our Drawer-In-Housing magnetic separators, also known as Drawer Magnets, consist of 4 rows of round magnetic tubes that are assembled into drawers. The magnetic tubes of each row are aligned on alternating centers from the row directly above or below it. As the product flows into the top of the housing, it is forced to cascade in a zig-zag pattern from row to row over the magnetic tubes. This ensures maximum tramp metal capture since the product comes in direct and repeated contact with a magnet as it travels through the housing.

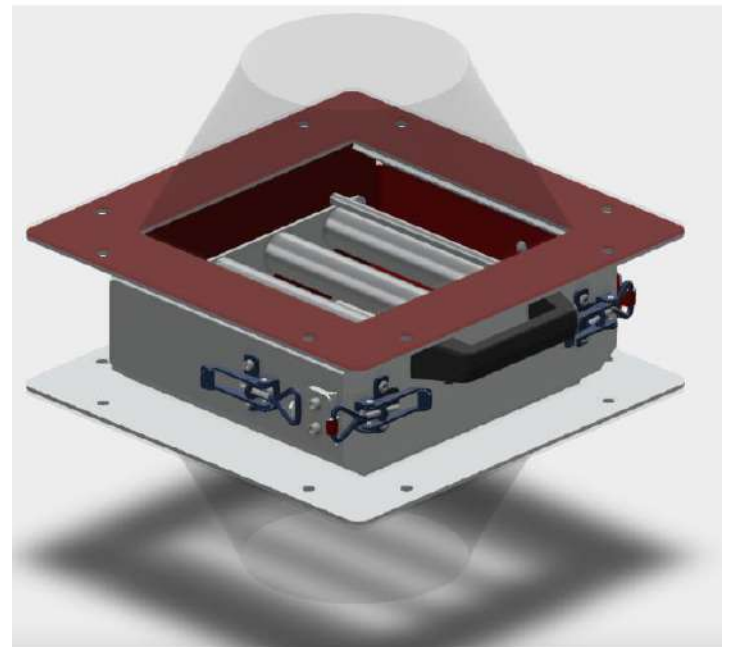
As ferrous metal contaminants pass through the magnetic field, they are held to the tubes and separated from the product. The metal must now be cleaned from the tubes regularly to prevent build-up and subsequent wash-off back into the product flow.

Cleaning

EZ-Clean Housing

The EZ-Clean Drawer-In-Housing Magnets are designed to simplify the cleaning process for quick removal of collected tramp metal.

To initiate cleaning, the operator pulls two handles on the front of the housing which removes the magnetic drawer from the product flow. As the drawer is pulled out, each magnetic tube passes through a seal which wipes the accumulated metal from the tubes. A catch pan is located under the tubes on the front of the housing to collect the metal for proper disposal.



MODEL NO	EZ-DM-200
MAGNET TYPE	NdFeB-Neodymium magnet-N35 / N52-
GAUSS	Br max:11.700-14.800 Gauss
BODY	AISI 304 stainless steel
Surface Gauss without cover	12.000
Surface Gauss with cover	6.000

